



Government of India
Ministry of Earth Sciences
India Meteorological Department



Press Release

Date: 14th June, 2025

Time of Issue: 1330 hours IST

Subject: (i) Conditions are favourable for further advancement of Southwest monsoon over some parts of Gujarat; some more parts of Vidarbha, Chhattisgarh & Odisha during next 2 days; over some parts of West Bengal, Jharkhand and Bihar during subsequent 3 days.
(ii) Monsoon likely to be in active phase with heavy to very heavy rainfall at a few places and extremely heavy falls (>20 cm) at isolated places over south peninsular India and Konkan & Goa till 16th June, 2025.
(iii) Heat Wave conditions are likely to continue to prevail over Northwest India including Western Himalayan Region on today, the 14th June and abate thereafter.

Southwest Monsoon: (Annexure I):

- ❖ The Northern Limit of Monsoon continues to pass through 17.0°N/55°E, 17.5°N/60°E, 18°N/65°E, 18.5°N/70°E, Mumbai, Ahilyanagar, Adilabad, Bhawanipatna, Puri, Sandhead Island, 23.5°N/89.5°E, Balurghat, 30°N/85°E.
- ❖ Conditions are favourable for further advancement of Southwest monsoon over some parts of Gujarat; some more parts of Vidarbha, Chhattisgarh & Odisha during next 2 days; over some parts of West Bengal, Jharkhand and Bihar during subsequent 3 days.

Realised weather during past 24 hours till 0830 hours IST of today, the 14th June, 2025 (Annexure II):

- ❖ **Heat wave conditions** prevailed at many places with **severe heat wave conditions** at isolated places over West Rajasthan; **Heat wave conditions** at isolated places over East Rajasthan, Jammu division, Himachal Pradesh, Punjab, Haryana and Madhya Pradesh.
- ❖ **Warm night to severe warm night conditions** prevailed at isolated places over West Rajasthan.
- ❖ **Hailstorm** occurred at isolated places over Vidarbha (Buldhana).
- ❖ **Heavy to very heavy rainfall with Extremely heavy rainfall** has been recorded at isolated places over Konkan.
- ❖ **Heavy rainfall** has been recorded at isolated places over Uttarakhand, West Uttar Pradesh, Arunachal Pradesh, Tripura, Madhya Maharashtra, Andaman & Nicobar Islands, Karnataka, Tamil Nadu, Puducherry & Karaikal, Kerala & Mahe, Coastal Andhra Pradesh & Yanam.
- ❖ **Thunderstorm accompanied with Squally/Gusty winds** with speed 60-90 kmph at isolated places over Madhya Maharashtra, West Madhya Pradesh, Uttarakhand, Himachal Pradesh; with speed 30-59 kmph at isolated places over Arunachal Pradesh, Assam & Meghalaya, Saurashtra & Kutch, Andaman & Nicobar Islands, Nagaland, Manipur, Mizoram & Tripura, Marathawada, Jharkhand, Konkan, Bihar, East Madhya Pradesh, Chhattisgarh, Odisha, Gujarat Region, Vidarbha.

For more details of realised weather, kindly refer **Annexure II**,

Detailed observations of Maximum Temperature during past 24 hours till 0830 hours IST of today are appended in **Annexure III**.

i. Weather Systems, Forecast and Warnings (refer to Annexure IV & V):

- ❖ An **upper air cyclonic circulation** lies over West Rajasthan & adjoining Pakistan and a **trough** runs from this upper air cyclonic circulation to north Madhya Maharashtra in lower tropospheric levels.

- ❖ An **upper air cyclonic circulation** lies over Marathwada in lower & middle tropospheric levels tilting southwestwards with height and a **trough** runs from this upper air cyclonic circulation to coastal Andhra Pradesh in lower & middle tropospheric levels.
- ❖ A **Western Disturbance** seen as a trough in middle tropospheric westerlies with its axis at 5.8 km above mean sea level runs roughly along Long. 70°E to the north of Lat. 26°N.
- ❖ A **cyclonic circulation** lies over south Bangladesh & adjoining north Bay of Bengal and a **trough** runs from this cyclonic circulation to south Odisha in lower tropospheric levels.
- ❖ A **cyclonic circulation** lies over westcentral Bay of Bengal off north Coastal Andhra Pradesh coast in middle tropospheric levels.
- ❖ A **cyclonic circulation** lies over Central Assam in lower tropospheric levels.
- ❖ Under the influence of these systems, the following weather is likely:

South Peninsular India:

- ✓ Light/moderate rainfall at many/some places accompanied with isolated **thunderstorm, lightning & gusty winds speed reaching 40-50 kmph** over Coastal Andhra Pradesh & Yanam, Rayalaseema, Telangana, Karnataka during 13th-17th; Kerala & Mahe, Tamil Nadu, Puducherry & Karaikal on 13th & 17th June.
- ✓ Isolated **heavy rainfall** likely over Tamil Nadu, Puducherry & Karaikal, Kerala & Mahe Coastal & South Interior Karnataka on 18th; Lakshadweep on 14th & 15th; Coastal Andhra Pradesh & Yanam, Telangana during 14th-17th; Rayalaseema on 14th; North Interior Karnataka on 16th & 17th June with **very heavy rainfall** over Tamil Nadu, Puducherry & Karaikal on 16th & 17th; Kerala & Mahe on 17th; Coastal Karnataka on 16th & 17th; South Interior Karnataka during 15th-17th; North Interior Karnataka on 14th & 15th with **Extremely heavy rainfall (>20 cm/24 hours)** likely at isolated places over **Tamil Nadu, Puducherry & Karaikal, Coastal Karnataka on 14th & 15th; South Interior Karnataka on 14th June; Kerala & Mahe during 14th-16th June.**
- ✓ **Strong surface winds** (speed reaching 40-60 kmph) very likely over Tamil Nadu, Puducherry & Karaikal, Kerala & Mahe, Coastal Andhra Pradesh & Yanam, Rayalaseema, Karnataka during 14th-16th June.

West India:

- ✓ Light/moderate rainfall at most/many places accompanied with **thunderstorm, lightning & gusty winds speed reaching 30-40 kmph** likely over Gujarat State during 14th -16th; Marathwada on 15th June with **Thundersquall (wind speed reaching 50-60 kmph gusting to 70 kmph)** very likely at isolated places over Konkan & Goa, Marathwada and Madhya Maharashtra on 14th June.
- ✓ Isolated **heavy rainfall** likely over Marathwada on 14th; Konkan & Goa during 18th-20th; Madhya Maharashtra during 17th-20th; Gujarat state on 14th & during 17th-19th June with **very heavy rainfall** at isolated places over Konkan & Goa on 16th & 17th; Madhya Maharashtra during 14th-16th; Gujarat state on 15th & 16th June with **Extremely heavy rainfall (>20 cm/24 hours)** likely at isolated places over **Konkan & Goa during 14th - 16th June.**

East & Central India:

- ✓ Light/moderate rainfall at most/many places accompanied with **thunderstorm, lightning & gusty winds speed reaching 40-50 kmph** likely over Madhya Pradesh during 14th-17th; Vidarbha, Chhattisgarh during 15th-17th; Andaman & Nicobar Islands, West Bengal & Sikkim during 13th-15th; Bihar, Jharkhand, Odisha during 13th-17th June with **Thundersquall (wind speed reaching 50-60 kmph gusting to 70 kmph)** very likely at isolated places over West Madhya Pradesh during 13th-15th; Vidarbha on 13th & 14th; Chhattisgarh on 14th; Bihar on 15th June.
- ✓ Isolated **heavy rainfall** also likely over West Madhya Pradesh on 15th; East Madhya Pradesh during 16th-18th; Vidarbha during 17th-20th; Chhattisgarh on 16th & 17th; Sub-Himalayan West Bengal & Sikkim on 14th & 15th & during 18th-20th; Gangetic West Bengal during 16th-20th; Bihar on 18th & 19th; Jharkhand on 16th, 19th & 20th; Odisha on 14th, 15th, 18th June with **very heavy rainfall** over West Madhya Pradesh on 20th; East Madhya Pradesh on 19th & 20th; Chhattisgarh during 18th-20th; Jharkhand on 17th & 18th; Odisha on 16th & 17th June.

Northwest India:

- ✓ Light/moderate rainfall at some/isolated places accompanied with **thunderstorm, lightning & gusty winds speed reaching 40-50 kmph** likely over Himachal Pradesh, Uttarakhand, Punjab, Haryana Chandigarh, Uttar Pradesh during 14th-20th; Rajasthan during 16th-18th June; with **gusty winds speed reaching 30-40 kmph** over Jammu-Kashmir-Ladakh-Gilgit-Baltistan-Muzaffarabad during 14th-20th June with **Thundersquall (wind speed reaching 50-60 kmph gusting to 70 kmph)** over East Rajasthan on 19th & 20th June.

- ✓ Isolated **heavy rainfall** likely over Uttarakhand on 14th & 15th; Himachal Pradesh & Uttar Pradesh on 19th & 20th; East Rajasthan on 15th & 20th June with **very heavy rainfall** on Uttarakhand during 16th-19th June.
- ✓ **Dust storm (wind speed reaching 50-60 kmph gusting to 70 kmph)** very likely at isolated places over Rajasthan on 14th & 15th June.

Northeast India:

- ✓ Light/moderate rainfall at many/most places accompanied with **thunderstorm, lightning & gusty winds speed reaching 30-50 kmph** likely to continue over Northeast India during next 7 days with **isolated heavy rainfall** over Arunachal Pradesh, Assam & Meghalaya, Nagaland, Manipur, Mizoram & Tripura during 14th-20th June with **very heavy rainfall** over Arunachal Pradesh, Nagaland, Manipur, Mizoram & Tripura during 17th-20th; Assam & Meghalaya during 16th-20th June.

Maximum Temperature Forecast:

- ❖ No significant change in maximum temperatures likely over Northwest, Central and East India during next 24 hours and gradual fall by 2-5°C thereafter during subsequent 5 days.
- ❖ No significant change in maximum temperatures likely over rest parts of the country.

Heat wave, Hot & Humid weather and Warm Night warnings:

- ❖ **Heat wave conditions** very likely in isolated pockets over Jammu-Kashmir, Himachal Pradesh, Punjab, Haryana Chandigarh & Delhi, East Uttar Pradesh and West Rajasthan on 14th June.
- ❖ **Hot & humid weather** is likely to prevail over Arunachal Pradesh, Assam & Meghalaya, Nagaland, Manipur, Mizoram & Tripura on 14th; Bihar on 14th & 15th June.
- ❖ **Warm night conditions** very likely in isolated pockets over Punjab, Haryana Chandigarh & Delhi on 14th & 15th June.

Fishermen Warnings:

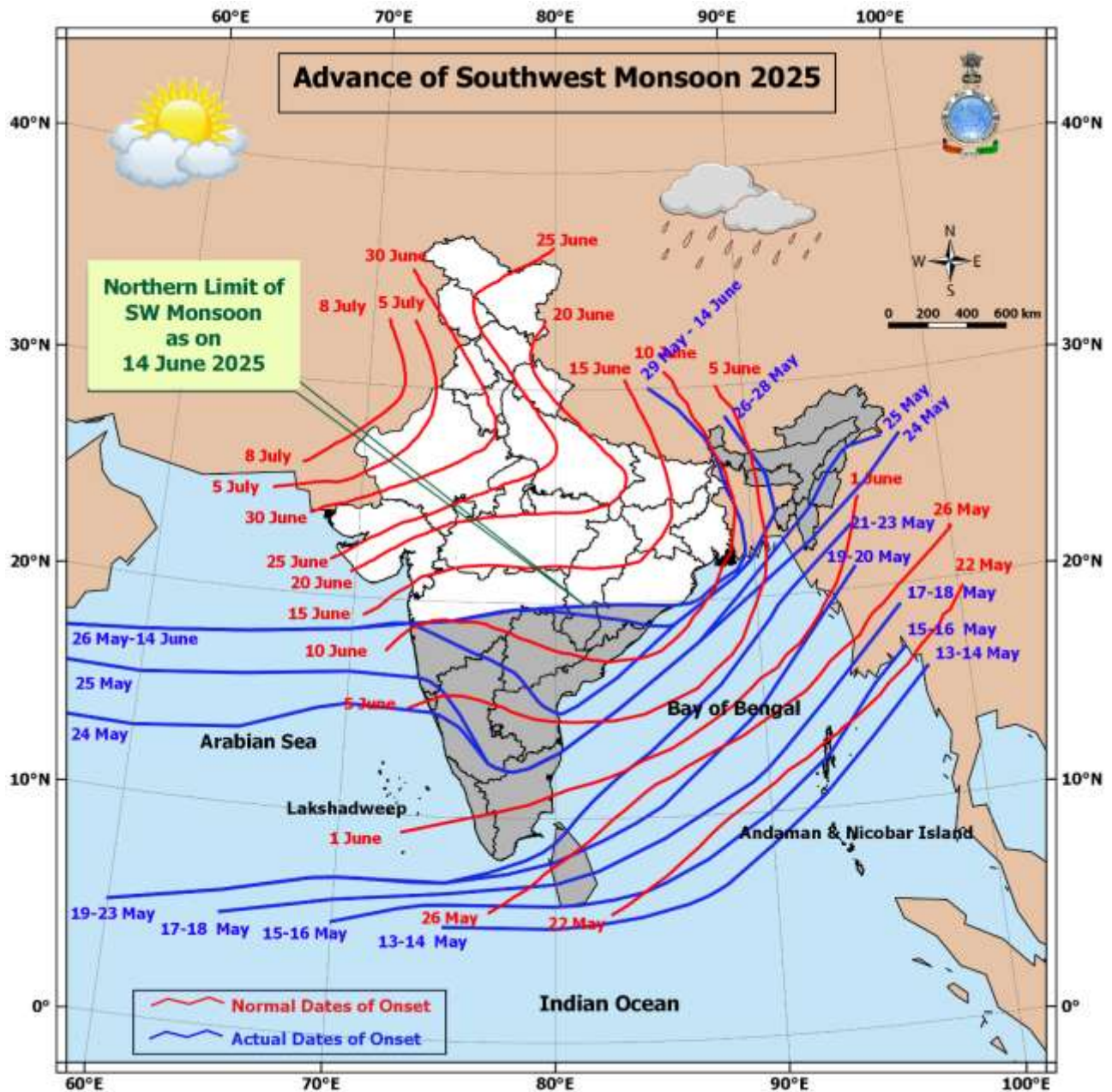
- ❖ Fishermen are advised not to venture along and off the Somalia coast and adjoining sea areas during 14th-18th; Oman & adjoining Yemen coasts for day 2 to day 5 (15th to 19th June).
- ❖ Fishermen are advised not to venture over Comorin area from day 1 to day 5 (14th to 19th June 2025); Along and off Konkan, Goa, Karnataka, Kerala coasts for day 1 to day 5 (14th to 19th June 2025); south Gujarat coast for day 2 and entire Gujarat coast for day 3 to 5 (16th to 19th June 2025); over Lakshadweep, Maldives areas and south east Arabian Sea, eastcentral Arabian Sea for day 1 to day 5 (14th to 19th June 2025); over many parts of southwest & westcentral Arabian Sea for day 1 (14th June), most parts of southwest & westcentral Arabian Sea for day 2 to day 5 (15th to 19th June); some parts of northeast Arabian Sea for day 2 (15th June), many parts of northeast Arabian Sea day 3 to day 5 (16th to 19th June 2025).
- ❖ Fishermen are advised not to venture over many parts of south Bay of Bengal for day 1 to day 4 (14th to 18th June 2025) & some parts of southwest Bay of Bengal for day 5 (19th June); over central Bay of Bengal for day 1 to day 5 (14th to 19th June 2025); along and off Tamil Nadu, Andhra Pradesh coasts for day 1 to day 4 (14th to 18th June 2025), along and off north Andhra Pradesh coast for day 5 (19th June 2025); along and off Sri Lanka coast for day 1 to day 4 (14th to 18th June 2025), along and off Odisha, West Bengal coasts and over northwest Bay of Bengal for day 4 and day 5 (17th to 19th June 2025).
- ❖ Fishermen are advised not to venture over the Gulf of Mannar from day 1 to day 5 (14th to 19th June 2025).
- ❖ Fishermen are advised not to venture over the Andaman Sea from day 1 to day 5 (14th to 19th June 2025). Total suspension of fishing operations is suggested over above mentioned areas and dates.

ii. Weather conditions and forecast over Delhi/NCR during 14th June to 17th June, 2025 (Annexure VI)

For more details, kindly refer National Weather Bulletin:

https://mausam.imd.gov.in/responsive/all_india_forecast_bulletin.php

For District wise warnings refer: <https://mausam.imd.gov.in/responsive/districtWiseWarningGIS.php>



Significant weather reported during past 24 hours till 0830 hours IST of today:**Rainfall recorded (in cm) reported during past 24 hours till 0830 hours IST of today, the 14th June:**

- ❖ **Konkan & Goa:** Rajapur (dist Ratnagiri) 25; Pernem (dist North Goa) 14; Kankavli (dist Sindhudurg) 10; Devgad (dist Sindhudurg), Mapusa (dist North Goa) 9 Each; Rameshwar ARG (dist Sindhudurg), Lanja (dist Ratnagiri) 8 Each; Panjim (dist North Goa) 7;
- ❖ **South Interior Karnataka:** Agumbe Emo (dist Shivamogga) 11;
- ❖ **Arunachal Pradesh:** Tezu AWS (dist Lohit) 10;
- ❖ **Kerala & Mahe:** Thennala AWS (dist Malappuram) 10; Kollam Rly (dist Kollam), Kunnamkulam (dist Thrissur) 9 Each; Mavelikara (dist Alapuzha), Vilangankunnu ARG (dist Thrissur), Laha AWS (dist Pathanamthitta) 8 Each; Tellichery (dist Cannur), Kochi IAF (dist Ernakulam), Vadakara (dist Kozhikode), Aryankavu (dist Kollam), Vellanikkara (dist Thrissur), Trivandrum AP (dist Thiruvananthapuram), Punalur (dist Kollam), Cherthala (dist Alapuzha), Mahe (dist Mahe), Mattanchery AWS (dist Ernakulam), Choondy AWS (dist Ernakulam), Kalamassery AWS (dist Ernakulam), Aluva AWS (dist Ernakulam), Munakkal AWS (dist Thrissur), Neyyattinkara (dist Thiruvananthapuram), Ernakulam South (dist Ernakulam), Alwaye PWD (dist Ernakulam) 7 Each;
- ❖ **Coastal Karnataka:** Mangaluru AP (dist Dakshina Kannada) 9; Udupi (dist Udupi) 8; Bhatkal (dist Uttara Kannada), Panambur (dist Dakshina Kannada), Uppinangadi (dist Dakshina Kannada), Gersoppa (dist Uttara Kannada) 7 Each;
- ❖ **Andaman & Nicobar Islands:** Maya Bandar (dist North & Middle Andaman) 9;
- ❖ **Uttarakhand:** Kaladhungi 9;
- ❖ **West Uttar Pradesh:** Dhampur (dist Bijnor) 8;
- ❖ **Coastal Andhra Pradesh & Yanam:** Palakoderu (dist West Godavari) 8;
- ❖ **West Uttar Pradesh:** Dhampur (dist Bijnor) 8, Nagina (dist Bijnor) 5;
- ❖ **Tamil Nadu, Puducherry & Karaikal:** Avalanche (dist Nilgiris), Taluk Office Pandalur (dist Nilgiris) 7 Each;
- ❖ **North Interior Karnataka:** B Bagewadi (dist Vijayapura) 7;
- ❖ **Tripura:** Manughat 7

Realised Gusty Winds (kmph) During Past 24hours ending at 0830 hrs IST of today the 14th June:

- ❖ **Madhya Maharashtra:** Shahada (Nandurbar) 80, Shivajinagar (Pune)- 33;
- ❖ **Uttarakhand:** (AWS) Chamoli 80, Pantnagar 44, Mukteshwar 43, Nainital (Jeolikot) 39, Matela 35, Pithoragarh 35, Jaspur 31, Kashipur 31;
- ❖ **West Madhya Pradesh:** Ashoknagar 78;
- ❖ **Himachal Pradesh:** Bilaspur_HP 65, Seobagh & Bajaura(each) 57, Bilaspur 56, Kukumseri 48, Neri 46, Kufri 37;
- ❖ **Arunachal Pradesh:** Lowertato 57, Anini 43, Longding 43, Daporijo 37;
- ❖ **Assam & Meghalaya:** Jorhat 56, Guwahati 44, Chandubi 43, Sivsagar 41, Vcbc_Rani 39, Panchgram 35, Shillongani 33, Dudhnoi 33, Lkhep 33, Silchar_Jns_College 33, Down_Town_University 31, Guwahati_City 31, Gauhati_University 31, Mawkyrwat 31;
- ❖ **Saurashtra & Kutch:** Amreli 54;
- ❖ **Andaman & Nicobar Islands:** Sri Vijayapuram 46; Swaraj Deep 43; Shaheed Dweep 35; Rangat Nimbutala, Ferrargunj 30;
- ❖ **Nagaland, Manipur, Mizoram & Tripura:** Kamalpur 46, Kailasahar 43, Khowai 33;
- ❖ **Marathwada:** Jalna 46, Chhatrapati Sambhaji Nagar 33;
- ❖ **Jharkhand:** Bokaro, Latehar 41; Ramgarh 30;
- ❖ **Konkan:** Sindhudurg (Devgad) 41, Raigad (Alibag) 37;
- ❖ **Bihaar:** Ziradei 39; Sipaya 35; East Champaran 30;
- ❖ **East Madhya Pradesh:** Khajuraho 39;
- ❖ **Chhattisgarh:** Kanker 39;
- ❖ **Odisha:** Ranital 35; Bhubaneswar 33; Gunupur 31;
- ❖ **Gujarat Region:** Bharuch 35;
- ❖ **Gangetic West Bengal:** Diamond Harbour 30;
- ❖ **Vidarbha:** Nagpur 30;

Temperature observations during past 24 hours till 0830 hours IST of today:

- ❖ Yesterday, Maximum temperatures were in the range of 44-49°C at a few places over Rajasthan. They were in the range of 39-44 °C over many places of Punjab, Bihar; at a few places over Madhya Pradesh, East Uttar Pradesh, Haryana-Chandigarh-Delhi, Gujarat state; in the range of 35-39°C over many places over Gangetic West Bengal, Vidarbha, Chhattisgarh; at a few places over Coastal Andhra Pradesh & Yanam, Tamil Nadu, Puducherry & Karaikal, Odisha, Assam & Meghalaya; at isolated places over West Uttar Pradesh, Himachal Pradesh, Tripura and below 35 °C elsewhere in the remaining part of the country. Yesterday, The highest maximum temperature of **49.4°C** was reported at **Sri Ganganagar (West Rajasthan)**.
- ❖ **Maximum Temperature Departures** (as on 13-06-2025): Maximum Temperatures were **markedly above normal (> 5.1°C)** at most places over Arunachal Pradesh; at many places over Assam & Meghalaya and West Rajasthan; at a few places over Sub Himalayan West Bengal & Sikkim; at isolated places over Odisha, West Uttar Pradesh, Himachal Pradesh, Jammu Kashmir-Ladakh-Gilgit-Baltistan-Muzaffarabad, East Rajasthan, West Madhya Pradesh and East Madhya Pradesh; **appreciably above normal (3.1°C to 5.0°C)** at most places over Nagaland, Manipur, Mizoram & Tripura; at many places over Bihar; at a few places over East Uttar Pradesh and Punjab; at isolated places over Haryana-Chandigarh, Delhi, Chhattisgarh and Tamil Nadu, Puducherry & Karaikal; **above normal (1.6°C to 3.0°C)** at a few places over Gangetic West Bengal and Gujarat Region; at isolated places over Saurashtra & Kutch and Vidarbha and **near normal (-1.5°C to 1.5°C)** at many places over Jharkhand, Konkan & Goa, Coastal Andhra Pradesh & Yanam and Lakshadweep; at a few places over Andaman & Nicobar Islands, Madhya Maharashtra, Telangana, South Interior Karnataka and Kerala & Mahe; at isolated places over Uttarakhand, Rayalaseema and North Interior Karnataka.

Fig.1: Maximum Temperatures

Fig.2: Departure of Maximum Temperatures

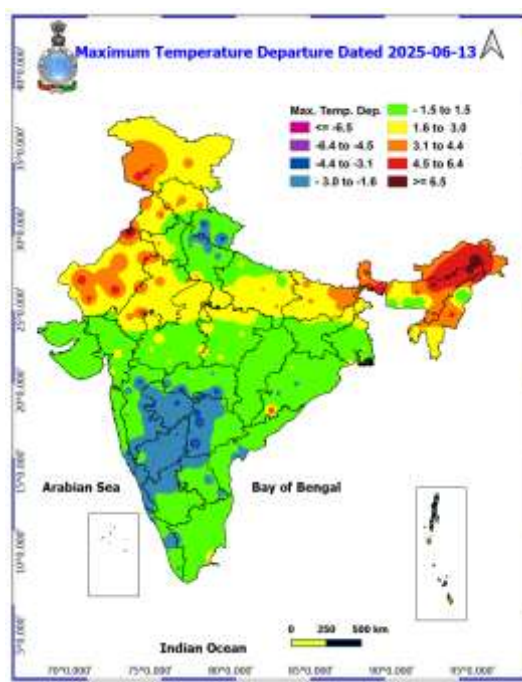
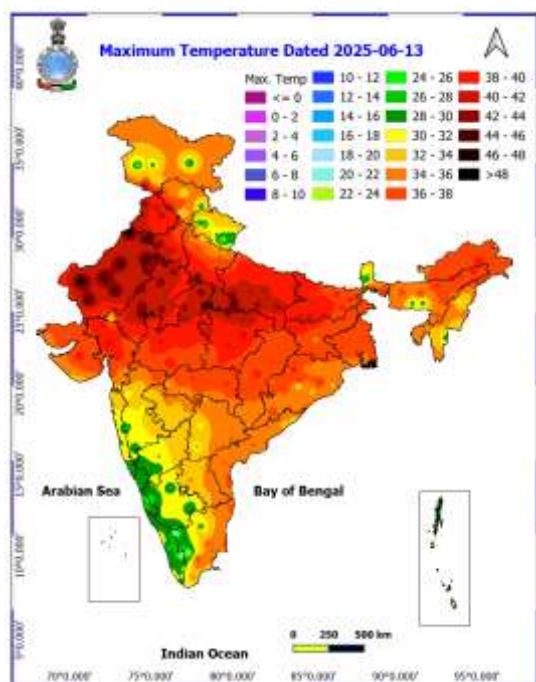
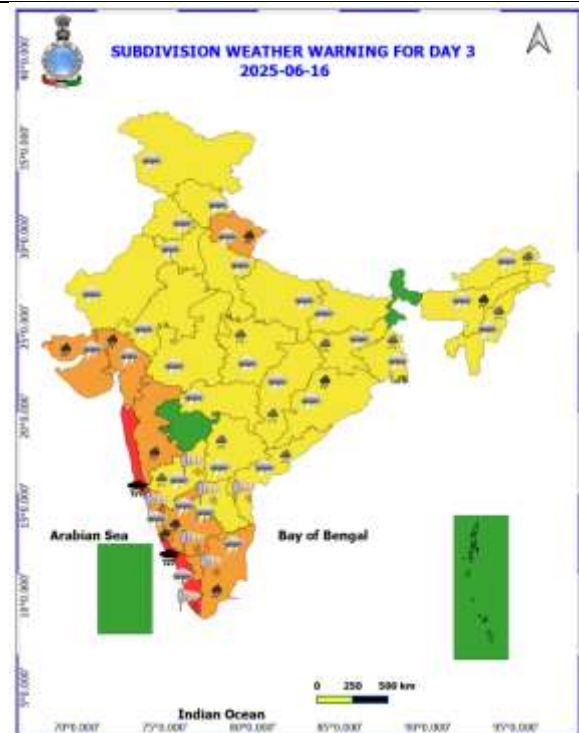
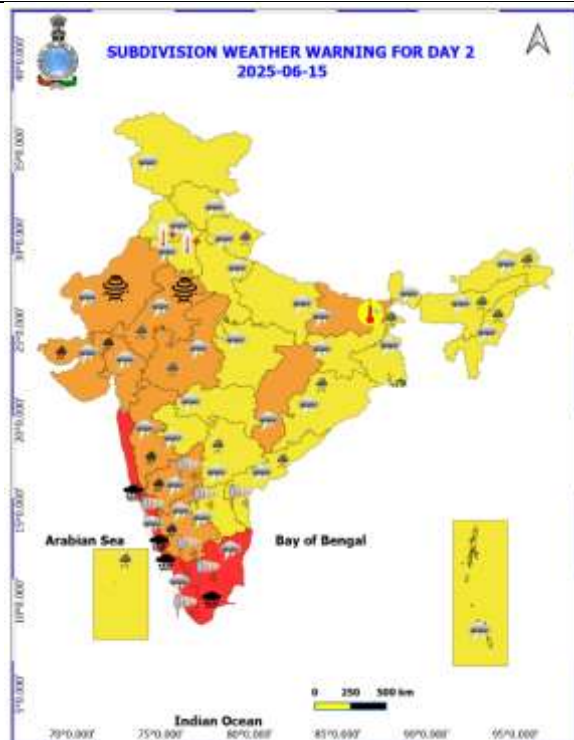
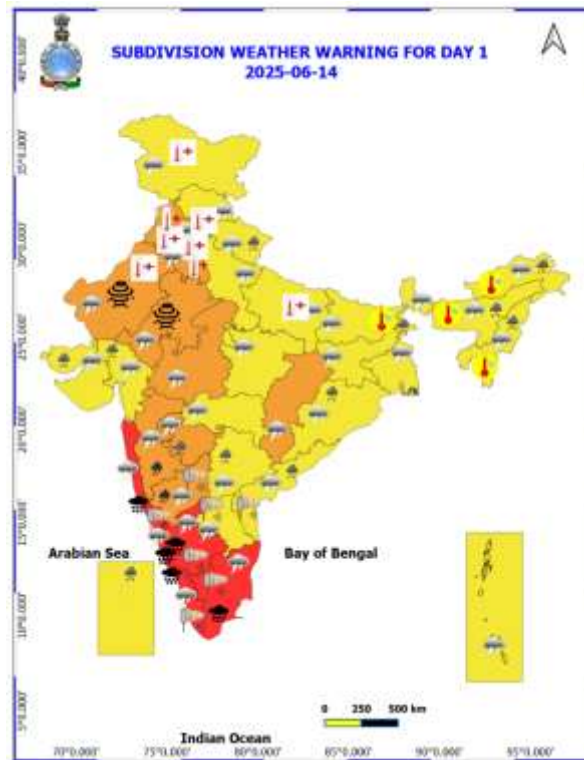
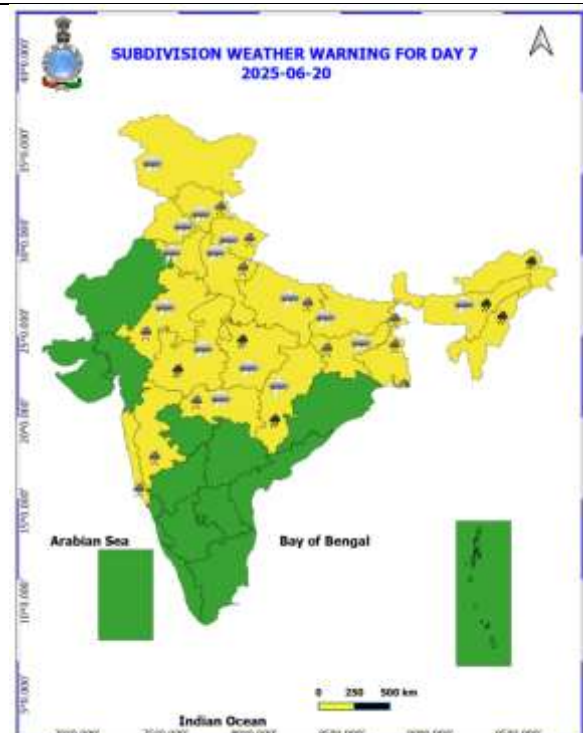
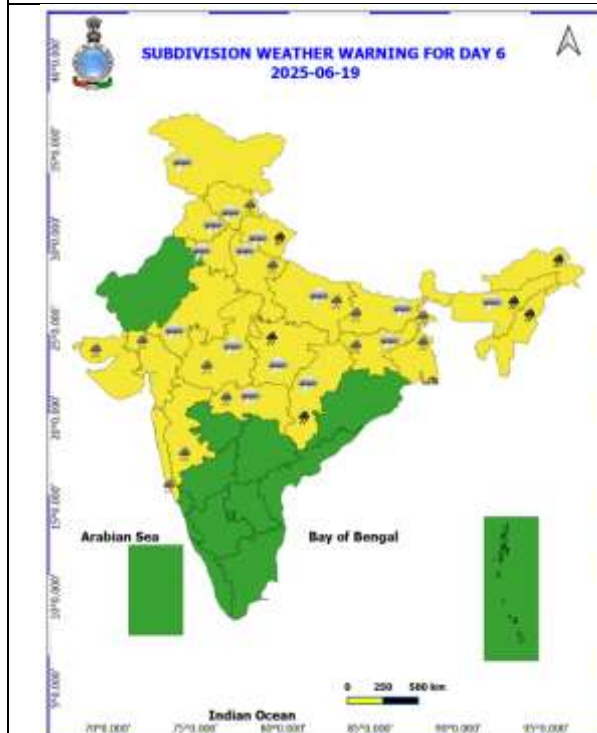
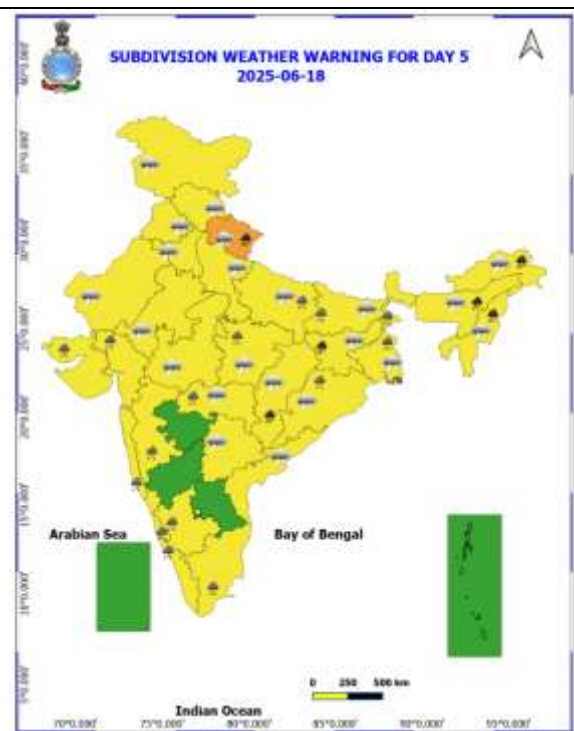
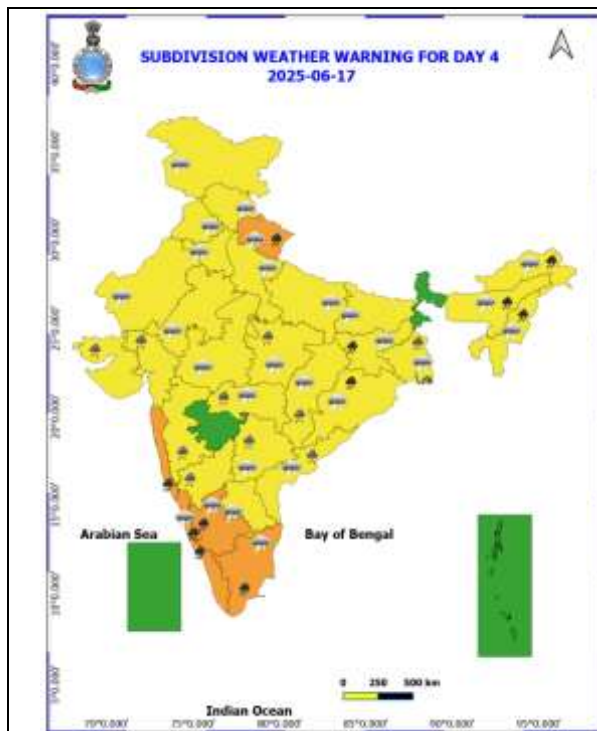


Table-1								
7 Days Rainfall Forecast								
S.No.	Subdivision	14- Jun	15- Jun	16- Jun	17- Jun	18- Jun	19- Jun	20- Jun
		Day 1	Day 2	Day 3	Day 4	Day 5	Day 6	Day 7
1	ANDAMAN & NICOBAR ISLANDS	WS	WS	WS	WS	FWS	FWS	SCT
2	ARUNACHAL PRADESH	FWS	FWS	FWS	WS	WS	WS	WS
3	ASSAM & MEHGHALAYA	SCT	FWS	FWS	WS	WS	WS	WS
4	NAGALAND, MANIPUR, MIZORAM AND TRIPURA	FWS	FWS	FWS	WS	WS	WS	WS
5	SUB HIMALAYAN WEST BENGAL & SIKKIM	FWS	WS	FWS	FWS	FWS	FWS	FWS
6	GANGETIC WEST BENGAL	SCT	FWS	FWS	WS	WS	WS	WS
7	ODISHA	SCT	FWS	WS	WS	FWS	FWS	SCT
8	JHARKHAND	SCT	FWS	FWS	WS	WS	WS	WS
9	BIHAR	ISOL	SCT	SCT	FWS	FWS	FWS	SCT
10	EAST UTTAR PRADESH	ISOL	SCT	SCT	FWS	FWS	FWS	FWS
11	WEST UTTAR PRADESH	ISOL	ISOL	ISOL	SCT	SCT	FWS	FWS
12	UTTARAKHAND	FWS	FWS	FWS	WS	WS	WS	WS
13	HARYANA, CHANDIGARH & DELHI	ISOL	ISOL	ISOL	SCT	SCT	FWS	FWS
14	PUNJAB	ISOL	ISOL	ISOL	ISOL	ISOL	SCT	SCT
15	HIMACHAL PRADESH	ISOL	ISOL	ISOL	SCT	SCT	SCT	FWS
16	JAMMU AND KASHMIR AND LADAKH	SCT	ISOL	SCT	ISOL	ISOL	ISOL	ISOL
17	WEST RAJASTHAN	ISOL	ISOL	ISOL	ISOL	ISOL	ISOL	ISOL
18	EAST RAJASTHAN	SCT	SCT	ISOL	ISOL	ISOL	SCT	SCT
19	WEST MADHYA PRADESH	SCT	FWS	FWS	FWS	FWS	FWS	FWS
20	EAST MADHYA PRADESH	ISOL	SCT	FWS	FWS	FWS	WS	WS
21	GUJRAT REGION	FWS	WS	WS	FWS	FWS	SCT	SCT
22	SAURASHTRA & KUTCH	FWS	WS	WS	WS	FWS	SCT	SCT
23	KONKAN & GOA	WS	WS	WS	WS	WS	WS	WS
24	MADHYA MAHARASHTRA	FWS	FWS	SCT	SCT	SCT	SCT	SCT
25	MARATHWADA	SCT	SCT	SCT	ISOL	ISOL	ISOL	ISOL
26	VIDARBHA	SCT	SCT	FWS	FWS	FWS	FWS	FWS
27	CHHATTISGARH	ISOL	SCT	FWS	FWS	FWS	FWS	FWS
28	COASTAL ANDHRA PRADESH	SCT	SCT	SCT	SCT	SCT	ISOL	ISOL
29	TELANGANA	SCT	SCT	FWS	FWS	FWS	SCT	SCT
30	RAYALASEEMA	SCT	SCT	ISOL	ISOL	ISOL	ISOL	ISOL
31	TAMILNADU & PUDUCHERRY	SCT	SCT	SCT	SCT	ISOL	ISOL	ISOL
32	COSTAL KARNATAKA	WS	WS	WS	WS	WS	WS	WS
33	NORTH INTERIOR KARNATAKA	WS	WS	WS	FWS	FWS	SCT	SCT
34	SOUTH INTERIOR KARNATAKA	WS	WS	WS	FWS	FWS	SCT	SCT
35	KERALA AND MAHE	WS	WS	WS	WS	WS	WS	WS
36	LAKSHADWEEP	WS	WS	WS	WS	WS	WS	WS

- As the lead period increases forecast accuracy decreases.





- Action may be taken based on ORANGE AND REDCOLOUR warnings.
- Vulnerable regions likely urban and hilly areas action may be initiated for heavy rainfall warning.
- As the lead period increases forecast accuracy decreases.

Detailed districtwise Multi Hazard weather warning for next five days available at
<https://mausam.imd.gov.in/responsive/districtWiseWarningGIS.php>

Weather forecast over Delhi/NCR during 14th to 17th June 2025**Past Weather:**

There has been a fall in the minimum temperature up to 1 - 2°C and fall in the maximum temperature up to 3 - 4°C over Delhi/NCR during the past 24 hours. The maximum and minimum temperatures over Delhi were around 39 to 41°C and 26 to 39° respectively. The minimum temperature was above normal up to 1 - 2°C and the maximum temperature was near normal. Mainly clear sky conditions with predominant surface wind from the east direction with wind speeds up to 20 kmph gusty to 35 kmph prevailed during the past 24 hours. Mainly clear sky conditions with wind speed less than 14 kmph from the east direction prevailed over the region in the forenoon today.

Weather Forecast:

14.06.2025: Mainly clear sky becoming partly cloudy sky towards afternoon. Hot and humid weather conditions. Very light to light rain/thunderstorm/dust storm/lighting accompanied with gusty winds 40 -50 kmph temporary reaching 60 kmph during thunderstorm with dust rising winds towards evening/night. The maximum temperatures over Delhi are likely to be in the range of 39 to 41°C. The maximum temperature will be near normal. The predominant surface wind will likely be from the southeast direction with a wind speed of less than 20 kmph in the afternoon. The wind speed will gradually decrease becoming 15-18 kmph from the southeast direction during evening and night.

15.06.2025: Partly cloudy sky. Very light to light rain/thunderstorm/lighting accompanied with gusty winds 40 - 50 kmph temporary reaching 60 kmph during thunderstorm. The maximum and minimum temperatures over Delhi are likely to be in the range of 39 to 41°C and 27 to 29°C respectively. The minimum temperature will be near normal and the maximum temperature will be near normal. The predominant surface wind will likely be from the southwest direction with a wind speed of less than 15 kmph during the morning hours. The wind speed will gradually increase becoming 12-16 kmph from the northwest direction in the afternoon. It will increase becoming less than 25 kmph from the northwest direction during evening and night.

16.06.2025: Generally cloudy sky. Light to moderate rain/thunderstorm/lighting. The maximum and minimum temperatures over Delhi are likely to be in the range of 36 to 38°C and 26 to 28°C respectively. The minimum temperature will be below normal up to 1 - 2°C and the maximum temperature will be below normal up to 1 - 2°C. The predominant surface wind will likely be from the southeast direction with a wind speed of less than 15 kmph during the morning hours. The wind speed will gradually increase becoming less than 18 kmph from the southeast direction in the afternoon. It will increase to less than 25 kmph from the southeast direction during the evening and night.

17.06.2025: Generally cloudy sky. Light to moderate rain/thunderstorm/lighting. The maximum and minimum temperatures over Delhi are likely to be in the range of 35 to 37°C and 25 to 27°C respectively. The minimum temperature will be below normal up to 1 - 3°C and the maximum temperature will be below normal up to 1 - 3°C. The predominant surface wind will likely be from the east direction with a wind speed of less than 20 kmph during the morning hours. The wind speed will gradually decrease becoming less than 15 kmph from the northeast direction in the afternoon. It will increase to less than 25 kmph from the southeast direction during the evening and night.

Impact expected and Action Suggested due to hot and humid conditions:

- Be cautious and take precautionary measures though there is no likelihood of heat wave conditions. There is likelihood of heat related impact to vulnerable population as the temperatures are likely to be above normal.
- Moderate health concern for vulnerable people e.g. infants, elderly people with chronic diseases.
- Avoid heat exposure, wear light weight, light colored, loose, cotton clothes, cover your head, use a cloth, hat or umbrella.

Impact expected and Action Suggested due to thunderstorm with lightning/gusty winds:

- Be cautious and take precautionary measures, though there is the likelihood of thunderstorm/lighting and gusty winds (speed 40 – 50 kmph) temporarily reaching to 60 kmph during thunderstorm with dust rising surface winds.
- Breaking of tree branches, uprooting of large avenue trees, Large dead limbs blown from trees, Damage to standing crops, Minor to major damage to power and communication lines due to breaking of branches, Partial damage to vulnerable structures due to strong winds, Loose objects may fly.
- People are advised to keep a watch on the weather for worsening conditions and be ready to move to safer places accordingly, stay indoors, close windows & doors and avoid travel if possible, take safe shelters; do not take shelter under trees, do not lie on concrete floors and do not lean against concrete walls, unplug electrical/ electronic appliances, immediately get out of water bodies, keep away from all the objects that conduct electricity.

Impact & Action Suggested due to extremely heavy falls/ very heavy rainfall:

- ✓ **Extremely heavy rainfall (>20 cm/24 hours) at isolated places over Tamil Nadu, Puducherry & Karaikal, Coastal Karnataka on 14th & 15th; South Interior Karnataka on 14th; Konkan & Goa, Kerala & Mahe during 14th-16th June.**
- ✓ **Very heavy rainfall** on Uttarakhand during 16th-19th; Arunachal Pradesh, Nagaland, Manipur, Mizoram & Tripura during 17th-20th; Assam & Meghalaya during 16th-20th; West Madhya Pradesh on 20th; East Madhya Pradesh on 19th & 20th; Chhattisgarh during 18th-20th; Jharkhand on 17th & 18th; Odisha, Konkan & Goa, Tamil Nadu, Puducherry & Karaikal, Coastal Karnataka on 16th & 17th; Madhya Maharashtra during 14th-16th; Gujarat state on 15th & 16th; Kerala & Mahe on 17th; South Interior Karnataka during 15th-17th; North Interior Karnataka on 14th & 15th June.

Impact Expected

- Localized Flooding of roads, water logging in low lying areas and closure of underpasses mainly in urban areas of the above region.
- Occasional reduction in visibility due to heavy rainfall.
- Disruption of traffic in major cities due to water logging in roads leading to increased travel time.
- Minor damage to kutcha roads.
- Possibilities of damage to vulnerable structure.
- Localized Landslides/Mudslides/landslips/mudslips/landsinks/mudsinks.
- Damage to horticulture and standing crops in some areas due to inundation.
- It may lead to riverine flooding in some river catchments (for riverine flooding please visit Web page of CWC)

Action Suggested

- Check for traffic congestion on your route before leaving for your destination.
- Follow any traffic advisories that are issued in this regard.
- Avoid going to areas that face the water logging problems often.
- Avoid staying in vulnerable structure.

Impact expected and action suggested due to Heat wave condition:

- ❖ **Heat wave conditions** very likely in isolated pockets over Jammu-Kashmir, Himachal Pradesh, Punjab, Haryana Chandigarh & Delhi, East Uttar Pradesh and West Rajasthan on 14th June.

Orange alert Areas:

- High temperature & increased likelihood of heat illness symptoms in people who are either exposed to sun for a prolonged period or doing heavy work.
- High health concern for vulnerable people e.g. infants, elderly, people with chronic diseases.
- Avoid heat exposure– keep cool. Avoid dehydration.
- Drink sufficient water- even if not thirsty.
- Use ORS, homemade drinks like lassi, torani (rice water), lemon water, buttermilk, etc. to keep yourself hydrated.

Yellow alert Areas:

- Moderate temperature & heat is tolerable for general public but moderate health concern likely for vulnerable people e.g. infants, elderly, people with chronic diseases.
- Avoid heat exposure.
- Wear lightweight, light colour, loose, cotton clothes.
- Cover your head, use a cloth, hat or umbrella.

Impact expected and action suggested due to isolated thunderstorm with lightning/gusty & Squally winds over

- ✓ **Thundersquall (wind speed reaching 50-60 kmph gusting to 70 kmph)** at isolated places over Konkan & Goa, Marathawada, Chhattisgarh and Madhya Maharashtra on 14th; West Madhya Pradesh during 13th-15th; Vidarbha on 13th & 14th; Bihar on 15th; East Rajasthan on 19th & 20th June.
- ✓ **Dust storm (wind speed reaching 50-60 kmph gusting to 70 kmph)** at isolated places over Rajasthan on 14th & 15th June.
- ✓ **Strong surface winds** (speed reaching 40-60 kmph) over Tamil Nadu, Puducherry & Karaikal, Kerala & Mahe, Coastal Andhra Pradesh & Yanam, Rayalaseema, Karnataka during 14th-16th June.

Impact expected:

- Breaking of tree branches, uprooting of large avenue trees. Large dead limbs blown from trees. Damage to Standing crops.
- Minor to Major damage to banana and papaya trees.
- Minor to major damage to power and communication lines due to breaking of branches.
- Strong wind/hail may damage plantation, horticulture and standing crops.
- Partial damage to vulnerable structures due to strong winds.
- Minor damage to kutcha houses/walls and huts.
- Loose objects may fly.

Action suggested:

- People are advised to keep a watch on the weather for worsening conditions and be ready to move to safer places accordingly.
- Stay indoors, close windows & doors and avoid travel if possible.
- Take safe shelters; do not take shelter under trees.
- Do not lie on concrete floors and do not lean against concrete walls.
- Unplug electrical/ electronic appliances.
- Immediately get out of water bodies.
- Keep away from all the objects that conduct electricity.

Flash Flood Guidance:

24 hours Outlook for the Flash Flood Risk (FFR) till 1130 IST of 15-06-2025 :

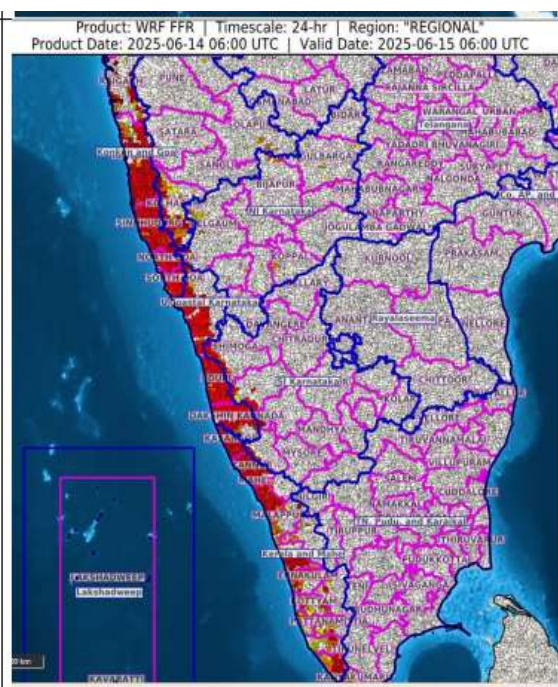
Low to Moderate flash flood risk likely over few watersheds & neighbourhoods of following Met Sub-divisions during next 24 hours.

Coastal Karnataka - Dakshin Kannada, Udupi and Uttar Kannada districts.

Kerala & Mahe - Alappuzha, Ernakulam, Idukki, Kannur, Kasargod, Kollam, Kottayam, Kozikod, Mahe, Malappuram, Palakkad, Pattanamittia, Thiruvananthapuram, Trishur and Wayanad districts.

Konkan & Goa - North Goa, South Goa, Raigarh, Ratnagiri and Sindhudurg districts.

Surface runoff/ Inundation may occur at some fully saturated soils & low-lying areas over Area of Concern (AoC) as shown in map due to expected rainfall occurrence in next 24 hours.



Legends & abbreviations:

- ❖ **Heavy Rain:**64.5-115.5mm; **Very Heavy Rain:**115.6-204.4mm; **Extremely Heavy Rain:** >204.4mm.
- ❖ **Obsy:** Observatory; Automatic Weather Station; **ARG:** Automatic Rain Gauge; **dist:** District; **NH:** National Highway; **KVK:** Krishi Vigyan Kendra; **DVC:** Damodar Valley Corporation; **PTO:** Part Time Office, **Aero:** Aerodrome, **IAF:** Indian Air Force.
- ❖ **Region wise classification of meteorological Sub-Divisions:**
 - **Northwest India:** Western Himalayan Region (Jammu-Kashmir-Ladakh-Gilgit-Baltistan-Muzaffarabad, Himachal Pradesh and Uttarakhand); Punjab, Haryana-Chandigarh-Delhi; West Uttar Pradesh, East Uttar Pradesh, West Rajasthan and East Rajasthan.
 - **Central India:** West Madhya Pradesh, East Madhya Pradesh, Vidarbha and Chhattisgarh.
 - **East India:** Bihar, Jharkhand, Sub-Himalayan West Bengal & Sikkim; Gangetic West Bengal, Odisha and Andaman & Nicobar Islands.
 - **Northeast India:** Arunachal Pradesh, Assam & Meghalaya and Nagaland, Manipur, Mizoram & Tripura.
 - **West India:** Gujarat Region, Saurashtra & Kutch, Konkan & Goa, Madhya Maharashtra and Marathawada.
 - **South India:** Coastal Andhra Pradesh & Yanam, Telangana, Rayalaseema, Coastal Karnataka, North Interior Karnataka, South Interior Karnataka, Kerala & Mahe, Tamil Nadu, Puducherry & Karaikal and Lakshadweep.

LEGENDS

1. अंडमान और निकोबार द्वीपसमूह

2. अरुणाचल प्रदेश

3. असम और मेघालय

4. नागालैंड, मणिपुर, मिजोरम और त्रिपुरा

5. उप-हिमालयी पश्चिम बंगाल और सिक्किम

6. गंगीय पश्चिम बंगाल

7. ओडिशा

8. झारखंड

9. बिहार

10. पूर्वी उत्तर प्रदेश

11. पश्चिम उत्तर प्रदेश

12. उत्तराखंड

13. हरियाणा, चंडीगढ़ और दिल्ली

14. पंजाब

15. हिमाचल प्रदेश

16. जम्मू और कश्मीर और लद्दाख

17. पश्चिम राजस्थान

18. पूर्वी राजस्थान

19. पश्चिम मध्य प्रदेश

20. पूर्वी मध्य प्रदेश

21. गुजरात

22. सौराष्ट्र

23. कोंकण और गोवा

24. मध्य महाराष्ट्र

25. मराठवाड़ा

26. विदर्भ

27. छत्तीसगढ़

28. तटीय आंध्र प्रदेश और यनम

29. तेलंगाना

30. रायलसीमा

31. तमिलनाडु, पुडुचेरी और कराईकल

32. तटीय कर्नाटक

33. आंतरिक उत्तरी कर्नाटक

34. आंतरिक दक्षिणी कर्नाटक

35. केरल और माहे

36. लक्षद्वीप



1. Andaman & Nicobar Islands

2. Arunachal Pradesh

3. Assam & Meghalaya

4. Nagaland, Manipur, Mizoram & Tripura

5. Sub-Himalayan West Bengal & Sikkim

6. Gangetic West Bengal

7. Odisha

8. Jharkhand

9. Bihar

10. East Uttar Pradesh

11. West Uttar Pradesh

12. Uttarakhand

13. Haryana, Chandigarh & Delhi

14. Punjab

15. Himachal Pradesh

16. Jammu & Kashmir and Ladakh

17. West Rajasthan

18. East Rajasthan

19. West Madhya Pradesh

20. East Madhya Pradesh

21. Gujarat

22. Saurashtra

23. Konkan & Goa

24. Madhya Maharashtra

25. Marathwada

26. Vidarbha

27. Chhattisgarh

28. Coastal Andhra Pradesh & Yanam

29. Telangana

30. Rayalaseema

31. Tamilnadu, Puducherry & Karaikal

32. Coastal Karnataka

33. North Interior Karnataka

34. South Interior Karnataka

35. Kerala & Mahe

36. Lakshadweep

SPATIAL DISTRIBUTION (% of Stations reporting)

% Stations	Category	% Stations	Category
76-100	Widespread (WS/Most Places)	26-50	Scattered (SCT/A Few Places)
51-75	Fairly Widespread (FWS/Many Places)	1-25	Isolated (ISOL)



Fog



Heavy Snow



Cold Wave



Heavy Rain



Dust Storm



Cold Day



Very Heavy Rain



Heat Wave



Ground Frost



Extremely Heavy Rain



Warm Night



Thunder & Lightning



Hot Day



Hailstorm



Hot & Humid



Dust Raising Winds



Strong Surface Winds

COLOUR CODED WARNING

No Warning (No Action)

Watch (Be Aware)

Alert (Be Prepared To Take Action)

Warning (Take Action)

Probabilistic Forecast

Terms	Probability of Occurrence (%)
Unlikely	< 25
Likely	25 - 50
Very Likely	50 - 75
Most Likely	> 75

* Red colour warning does not mean "Red Alert", Red colour warning means "Take Action".

Forecast and Warning for any day is valid from 0830 hours IST of day till 0830 hours IST of next day.

For more details, kindly visit <https://mausam.imd.gov.in> or contact: 011-2434-4599

(Service to the Nation since 1875)

DEFINITION/CRITERIA

Rain/ Snow *

Heavy: 64.5 to 115.5 mm/cm *
Very Heavy: 115.6 to 204.4 mm/cm *
Extremely Heavy: > 204.4 mm/cm *

Heat Wave

When maximum temperature of a station reaches $\geq 40^{\circ}\text{C}$ for plains and $\geq 30^{\circ}\text{C}$ for hilly regions
(a) Based on Departure from normal

Heat Wave: Maximum Temperature Departure from normal 4.5°C to 6.4°C .

Severe Heat Wave: Maximum Temperature Departure from normal $\geq 6.5^{\circ}\text{C}$

(b). Based on Actual maximum temperature

Heat Wave: When actual maximum temperature $\geq 45^{\circ}\text{C}$.

Severe Heat Wave: When actual maximum temperature $\geq 47^{\circ}\text{C}$.

(c). Criteria for heat wave for coastal stations

When maximum temperature departure is $> 4.5^{\circ}\text{C}$ from normal. Heat Wave may be described provided maximum temperature $\geq 37^{\circ}\text{C}$.

Warm Night

When maximum temperature remains 40°C

Warm Night: When minimum temperature departure 4.5°C to 6.4°C .

Severe Warm Night: When minimum temperature departure $> 6.4^{\circ}\text{C}$.

Cold Wave

When minimum temperature of a station $\leq 10^{\circ}\text{C}$ for plains and $\leq 0^{\circ}\text{C}$ for hilly regions.

(a). Based on departure

Cold Wave: Minimum Temperature Departure from normal -4.5°C to -6.4°C .

Severe Cold Wave: Minimum Temperature Departure from normal $\leq -6.5^{\circ}\text{C}$

(b) Based on actual Minimum Temperature (for Plains only)

Cold Wave: When Minimum Temperature is $\leq 4.0^{\circ}\text{C}$

Severe Cold Wave: When Minimum Temperature is $\leq 2.0^{\circ}\text{C}$

(c) For Coastal Stations

When Minimum Temperature departure is $\leq -4.5^{\circ}\text{C}$ & actual Minimum Temperature is $\leq 15^{\circ}\text{C}$

Cold Day

When minimum temperature of a station $\leq 10^{\circ}\text{C}$ for plains and $\leq 0^{\circ}\text{C}$ for hilly regions
Based on departure

Cold Day: Maximum Temperature Departure from normal -4.5°C to -6.4°C .

Severe Cold Day: Maximum Temperature Departure from normal $\leq -6.5^{\circ}\text{C}$

Fog

Phenomenon of small droplets suspended in air and the horizontal visibility $< 1\text{km}$

Moderate Fog: When the visibility between 500-200 metres

Dense Fog: when the visibility between 50- 200 metres

Very Dense Fog: when the visibility < 50 metres

Thunderstorm

Sudden electrical discharges manifested by a flash of light (Lightning) and a sharp rumbling sound (thunder)

Dust/Sand Storm

An ensemble of particles of dust or sand energetically lifted to great heights by a strong and turbulent wind.

Frost

Ice deposits on ground

Air temperature $\leq 4^{\circ}\text{C}$ (over Plains)

Squall

A strong wind that rises suddenly, lasts for atleast 1 minute.

Moderate: Wind speed 52-61 kmph

Severe: Wind speed 62-67 kmph

Very Severe: Wind speed > 67 kmph

Sea State

Effect of various waves in the sea over specific area

Rough to very rough: Wind speed 41-62 kmph (22-33 knots) & Wave height 2.5-6 metre

High to very high: Wind speed 63-117 kmph (34-63 knots) & Wave height 6-14 metre

Phenomenal: Wind speed > 117 kmph (> 63 knots) & Wave height > 14 metre

Cyclone

Cyclonic Storm: Wind speed 62-67 kmph (34-47 knots)

Severe Cyclonic Storm: Wind speed 88-117 kmph (48-63 knots)

Very Severe Cyclonic Storm: Wind speed 118-165 kmph (64 - 89 knots)

Extremely Severe Cyclonic Storm: Wind speed 166-220 kmph (90 -119 knots)

Super Cyclone Storm: Wind speed > 220 kmph (> 119 knots)

* Red colour warning does not mean "Red Alert", Red colour warning means "Take Action".

Forecast and Warning for any day is valid from 0830 hours IST of day till 0830 hours IST of next day.

For more details, kindly visit <https://mausam.imd.gov.in> or contact: 011-2434-4599

(Service to the Nation since 1875)

Hot and Humid: When maximum temperatures remain 3°C above normal along with the above normal relative humidity.